

U.S. Natural Gas Weekly Storage



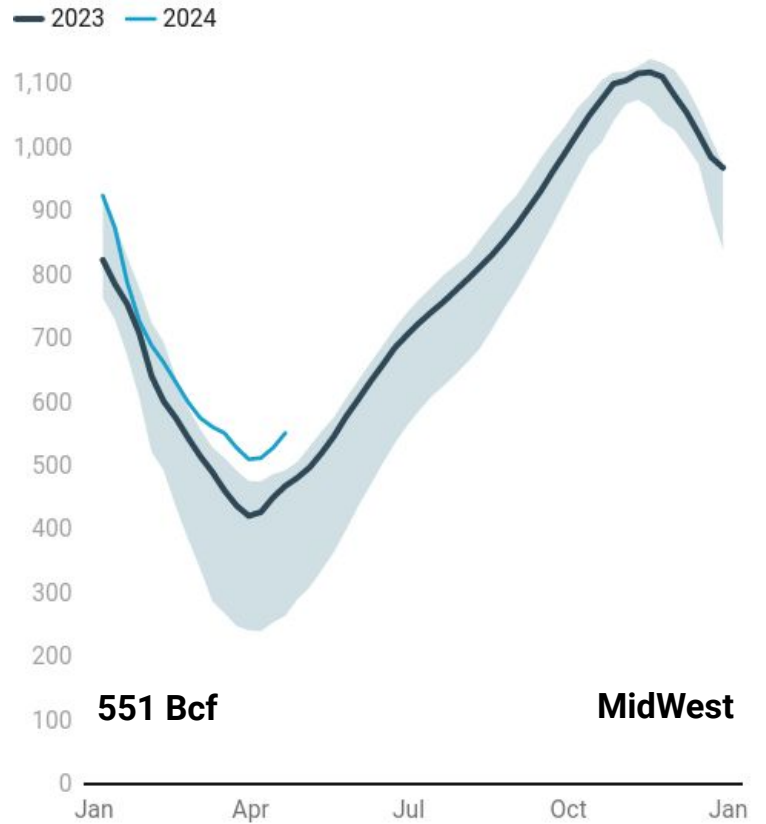
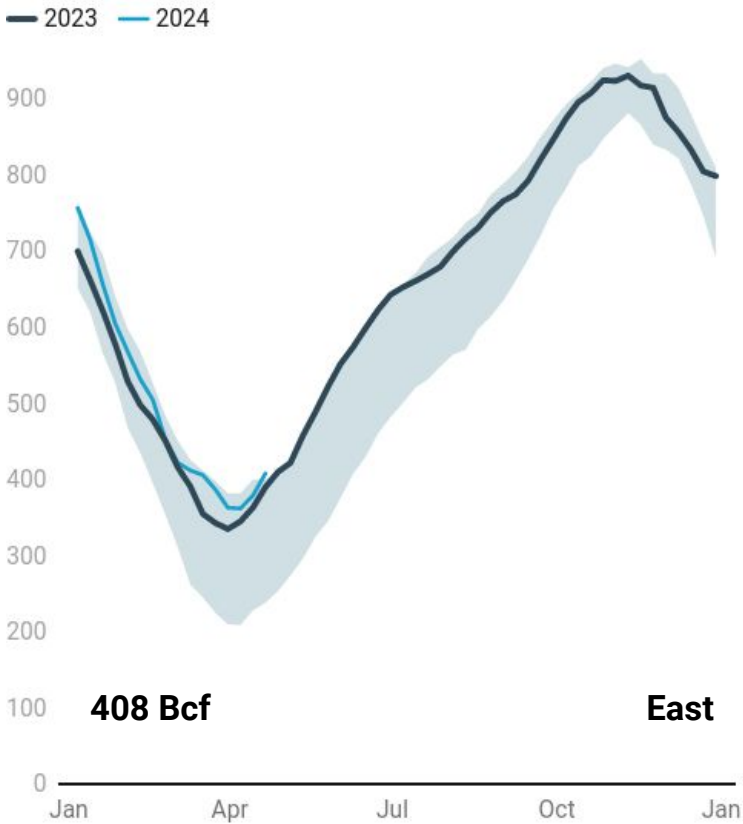
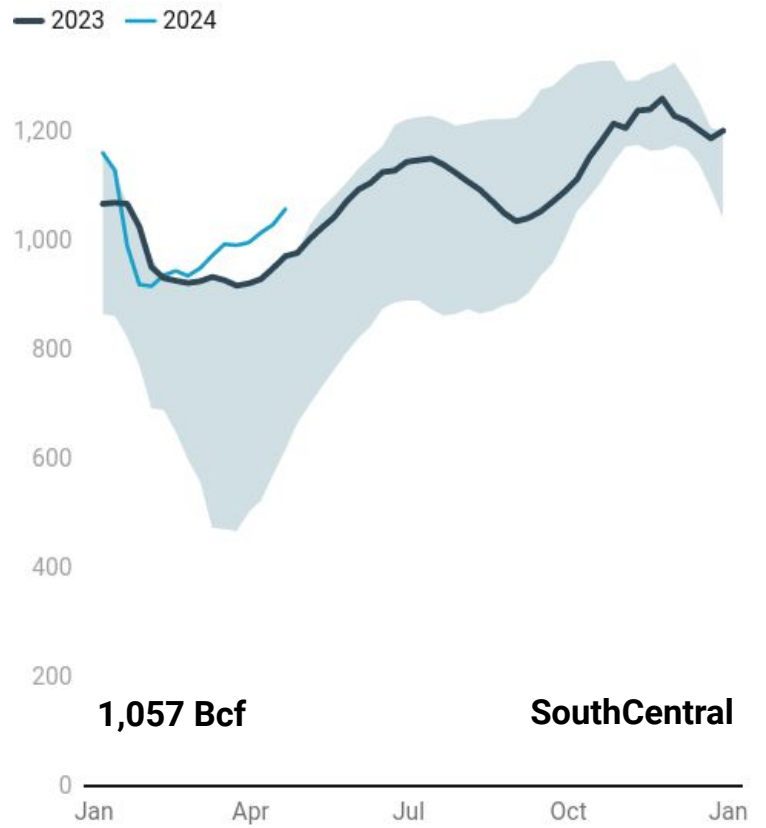
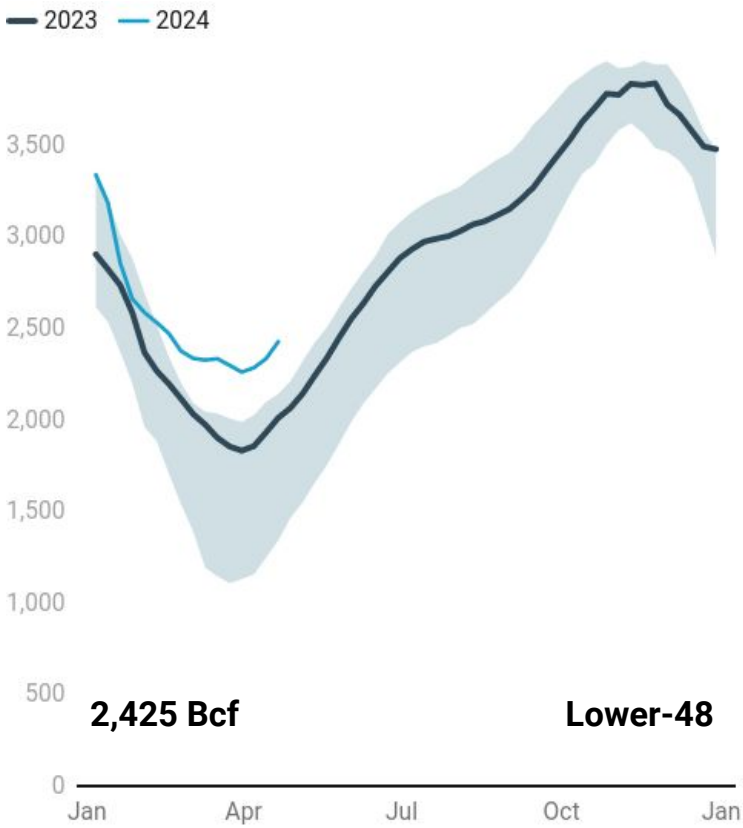
	2024-04-19	2024-04-12	Change	Weekly (%)	Last Year	% Change	5yr Avg	% Change.
Lower-48	2,425	2,333	92	3.9%	2,009	20.7%	1,814	33.7%
East	408	379	29	7.7%	390	4.6%	326	25.1%
SouthCentral	1,057	1,029	28	2.7%	971	8.9%	823	28.5%
Midwest	551	528	23	4.4%	468	17.7%	400	37.7%
MountainWest	173	167	6	3.6%	90	92.2%	95	81.3%
Pacific	235	230	5	2.2%	90	161.1%	170	38.6%
Salt	309	300	9	3.0%	275	12.4%	257	20.1%
NonSalt	749	729	20	2.7%	695	7.8%	565	32.5%

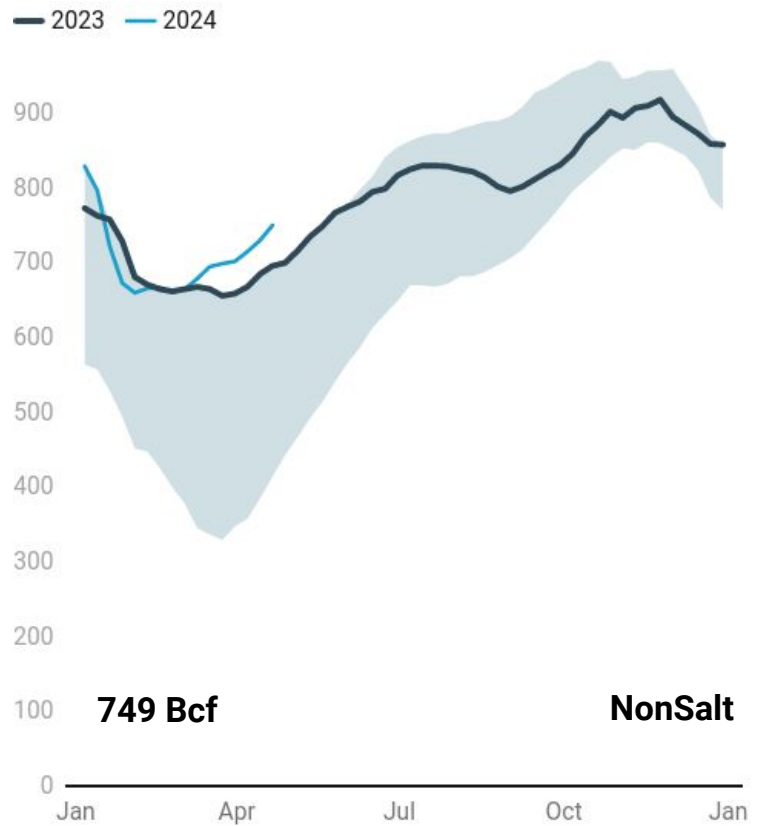
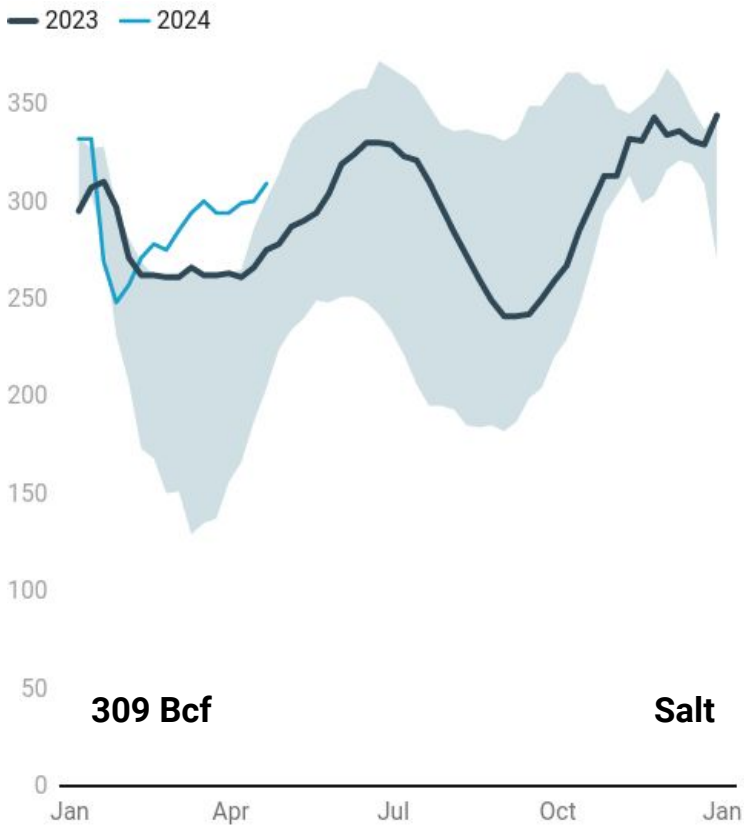
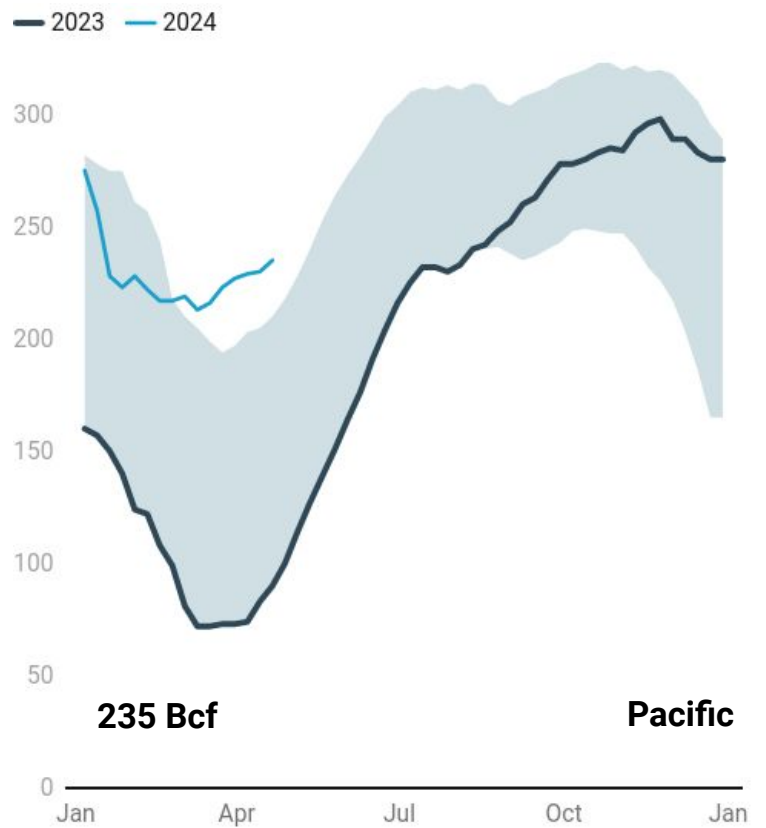
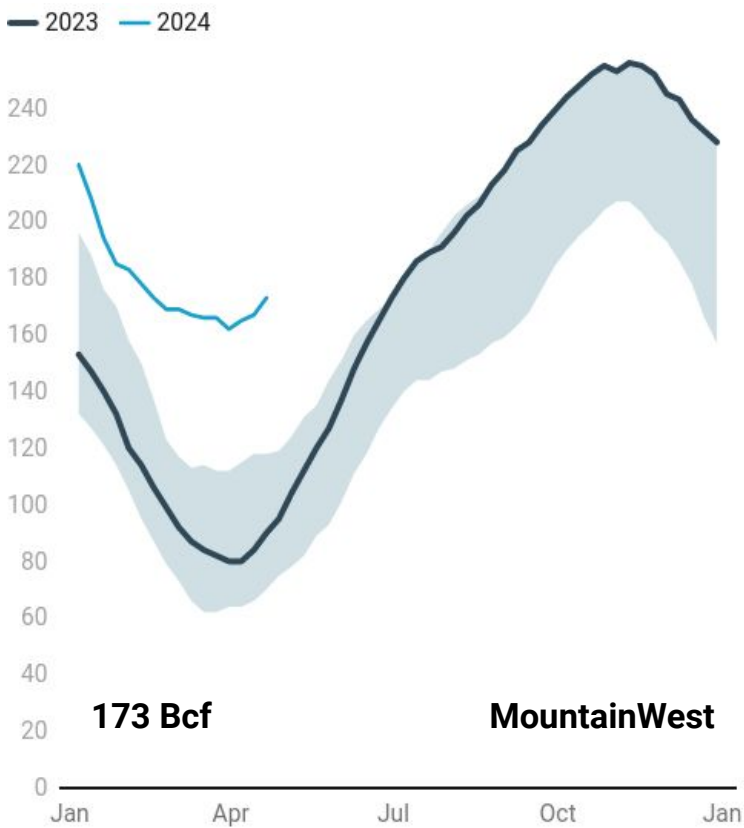
Weekly Summary

U.S. Lower-48 natural gas inventories came in at 2,425 Bcf, higher by 92 Bcf on the week. Lower-48 gas storage is **20.7% higher than last year and 33.7% higher than the five-year average.**

Compared to last year, gas storage in the **Pacific Region is 161.1% higher, and 38.6% above the five-year average.** Meanwhile, the **East Region is 4.6% higher than last year, and 25.1% above the five-year average.**

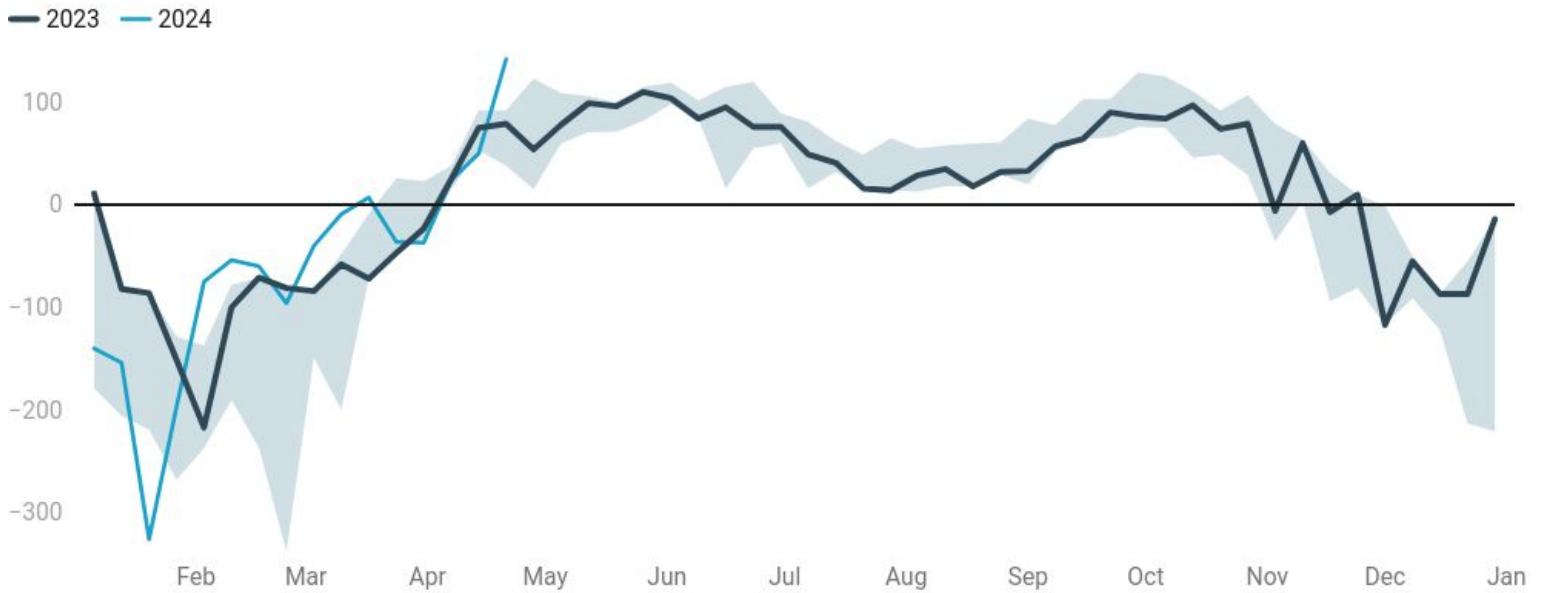
Salt storage is **12.4% higher than last year and 20.1% higher than the five-year average.** Non-salt gas inventories are **7.8% higher than last year and 32.5% higher than the five-year average.**





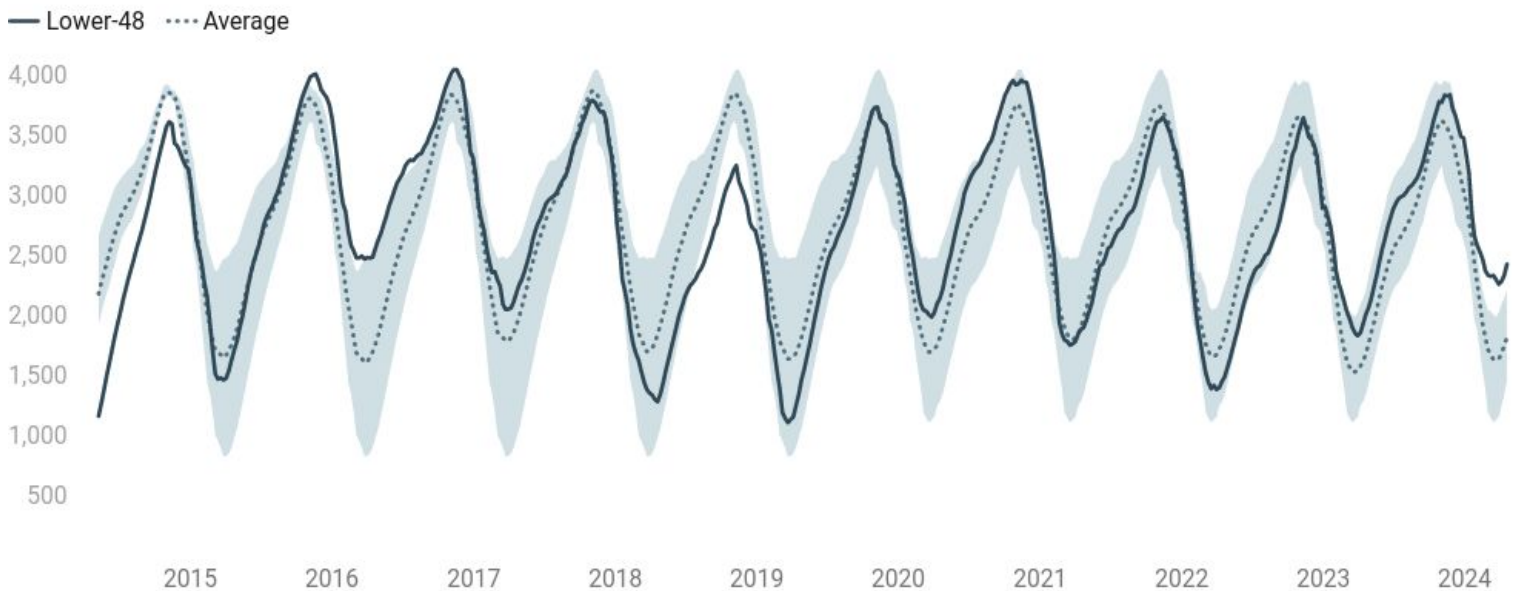
U.S. Natural Gas Weekly Storage

Weekly Injections/(Withdrawals), Bcf



Updated: 250424 09:42 CST

U.S. L-48 Natural Gas Stocks, Tcf



Updated: 250424 09:42 CST